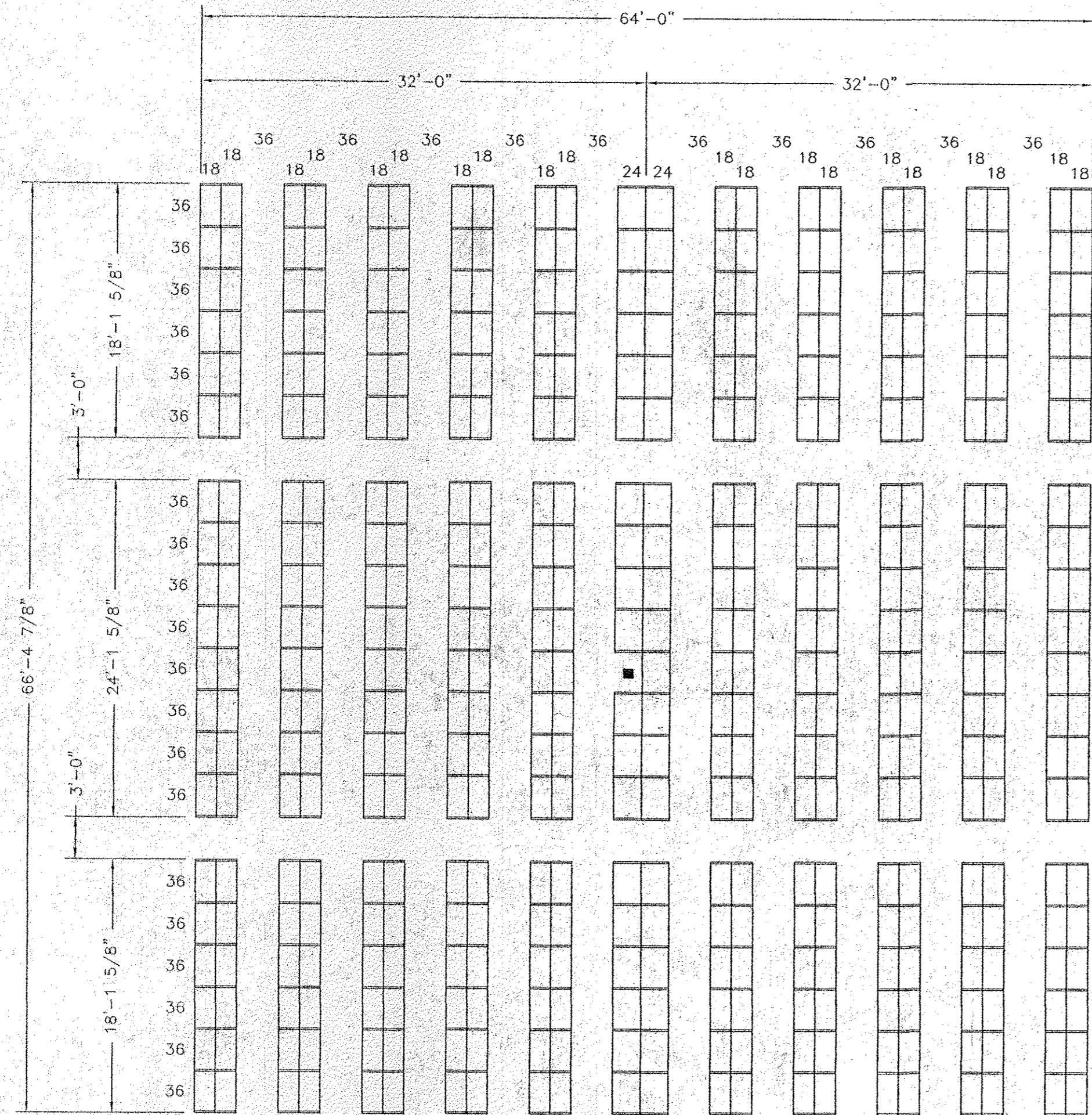
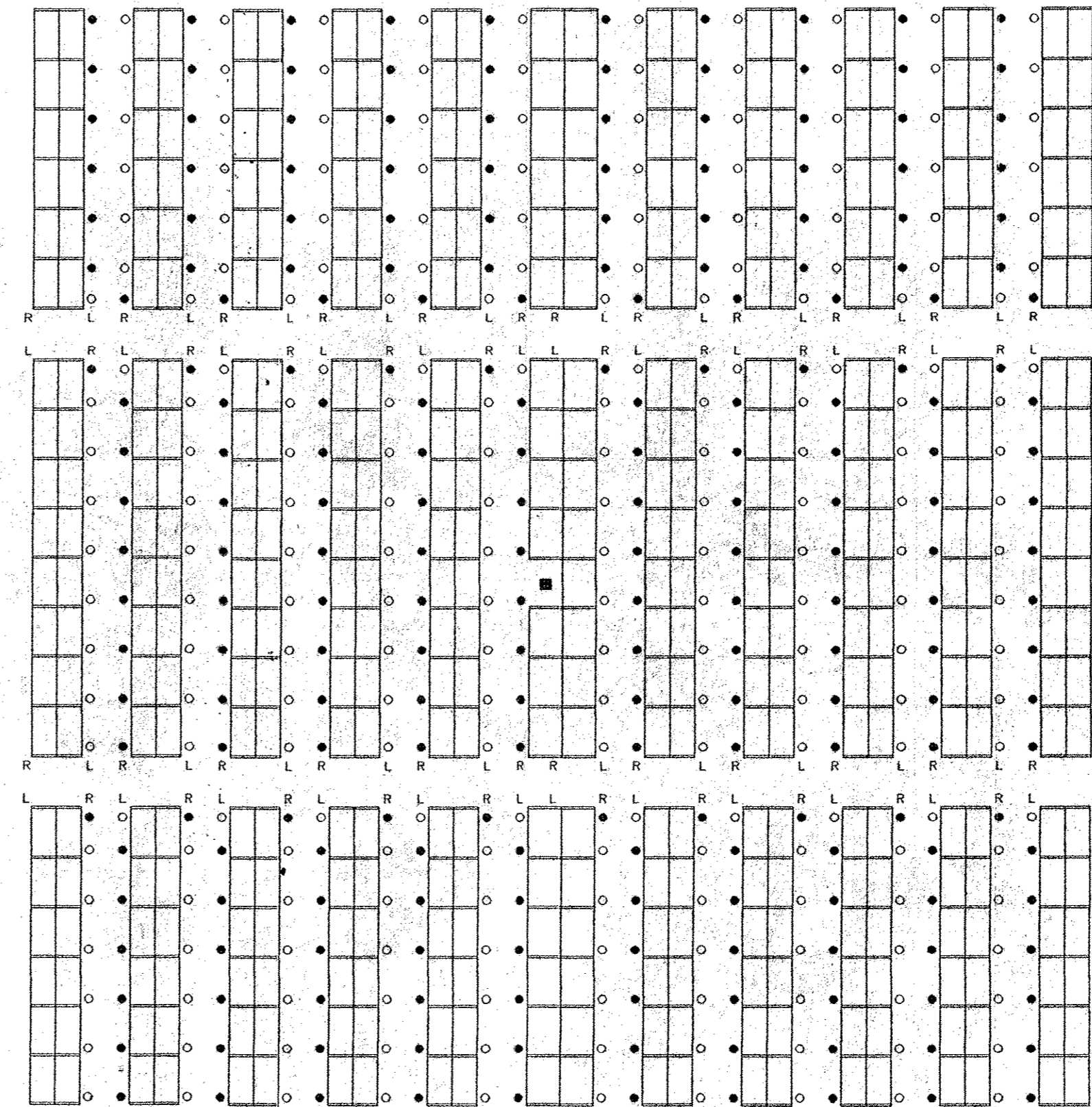


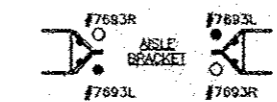
GROUND FLOOR LEVEL SHELVING PLAN



GROUND FLOOR LEVEL V-GRIP BRACKET SUPPORT PLAN



BRACKET DETAILS
V GRIP AISLE BRACKETS

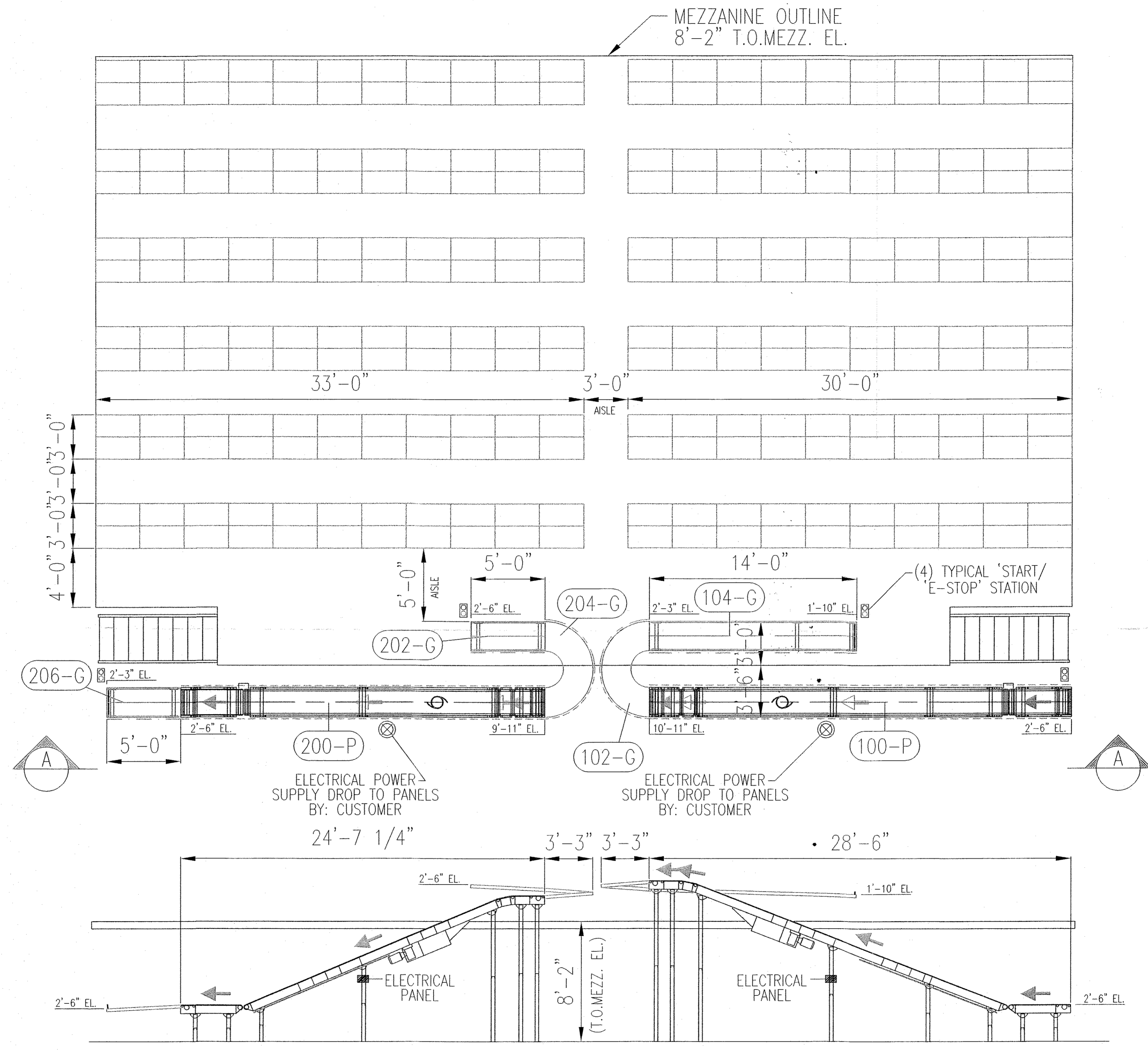


5-27-03
KENNETH R. KLIMAS
N.J. PROFESSIONAL ENGINEER
NO. 26889
Kenneth R. Klimas

- STORAGE RACK
- STRUCTURAL REVIEW ONLY
- GRAVITY LOADING ONLY

REV	DESCRIPTION	DATE	BY	CHK	DISTRIBUTOR	CUSTOMER	DRAWN BY	SCALE	CHECKED BY	DATE	DRAWING NO.
B	ADD DRAWING DETAILS	05/15/03	BW	AC	SNAP ON TOOLS	DEPOT AMERICA	AC	1/8"=1'-0"		08/28/02	02-239
A	DESIGN CHANGED OLD AND NEW MATERIAL	10-31-02	AC								02-239
											SHEET 1 OF 3

EQUIPTO
 4250 Bailey Drive - Addison, Texas 75001
 Tel: 214-443-8800 - Fax: 214-580-4408
 1-800-443-8800
<http://www.equip.to.com>
 Production in Spain
 Established 1977



SECTION VIEW 'A-A'

- Double High Adjustable Guard-Rail
- Single High Adjustable Guard-Rail
- Type 'B' Low Angle Guard-Rail (One Side Only)

DESCRIPTION	MIN (LxWxH)	AVG (LxWxH)	MAX (LxWxH)	MIN	AVG	MAX	CPM
TOTE	17'x 15'x 7'			25			
CARTON	7'x 7'x 6"	24'x 24'x 20"		5	40		
SIZE				WEIGHT			

REV:	DATE:	DESCRIPTION:	BY:

230	HYTROL GREEN	-	-
VOLTAGE	COLOR	AIR PSIG	AIR CFM
APPROVED FOR CONSTRUCTION			
AUTHORIZED BY: _____			
DATE: _____			
<small>This drawing is the property of Century Conveyor Service, Inc. Our drawings are provided for the sole purpose of communicating our designs and concepts to our customers. This drawing and the information depicted in it are not to be copied or used for any other purpose without the express permission of Century Conveyor Service.</small>			

DEPOT AMERICA
NEPTUNE, NEW JERSEY

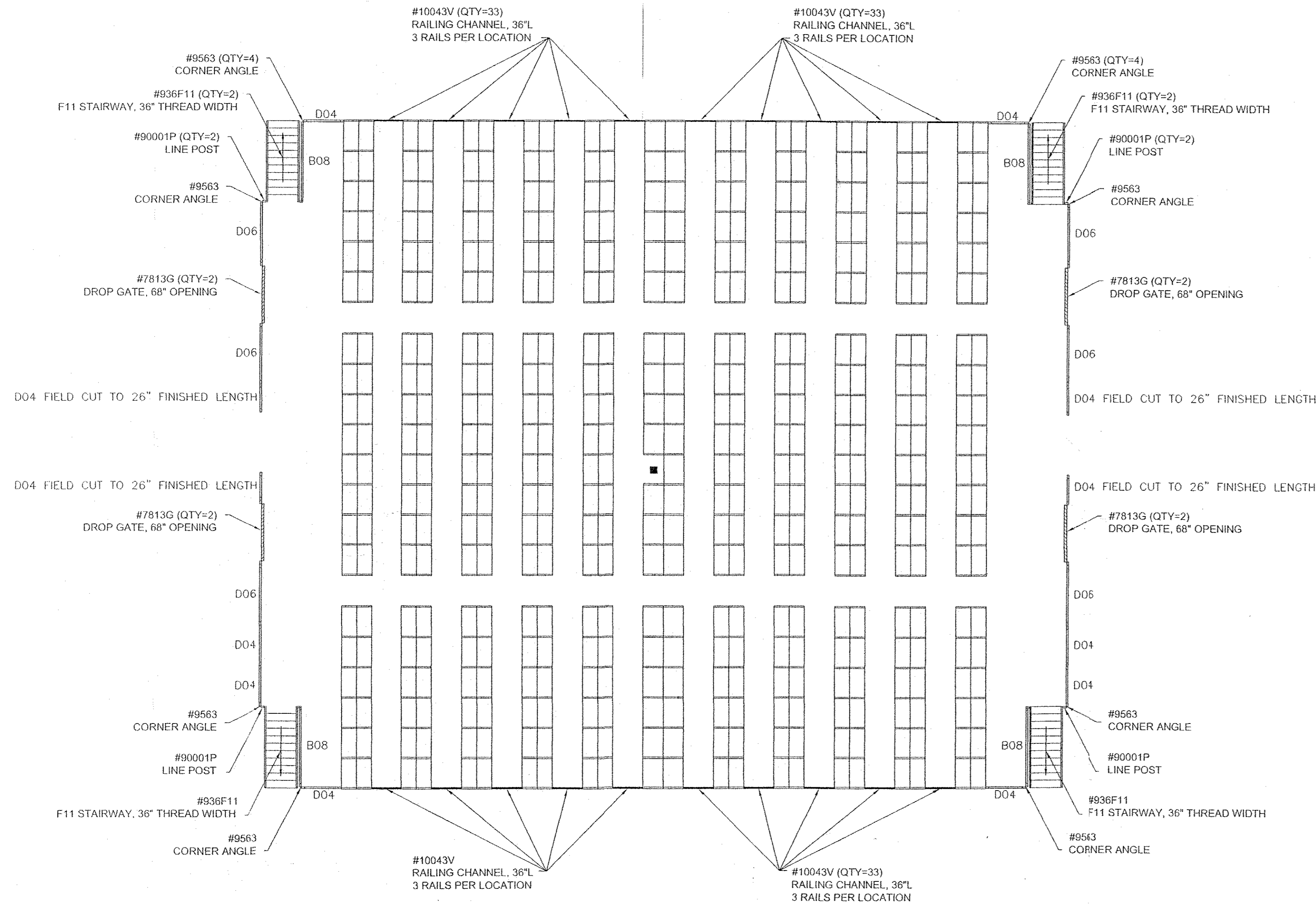
CONVEYOR SYSTEM LAYOUT

CENTURY Century Conveyor Service, Inc.
4 Gladys Court - Edison, N.J. 08817

SCALE: 1/4" = 1'-0"	DWG. NO. J-3715-L1-0
BY: Diego Reyes	REV. NO. -
DATE: November 27, 2001	REV. DATE: --/--/--

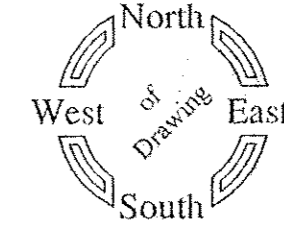
C:\My Documents\My Documents\Depot America\J-3715\J-3715-L1.dwg

MEZZANINE LEVEL RAILING & STAIRWAY PLAN

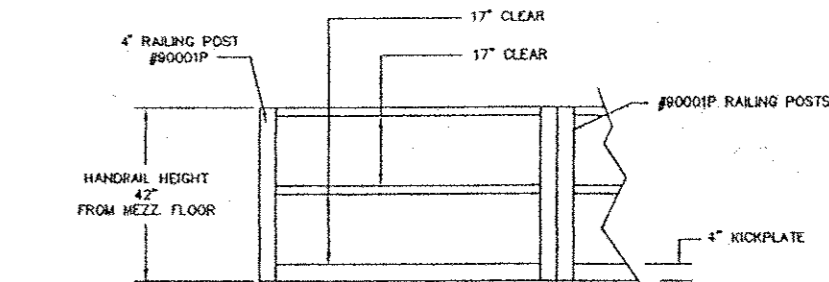
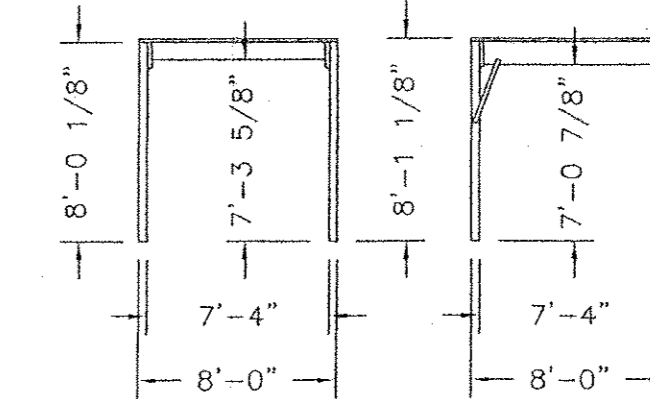


GENERAL NOTES (UNLESS SPECIFIED OTHERWISE)

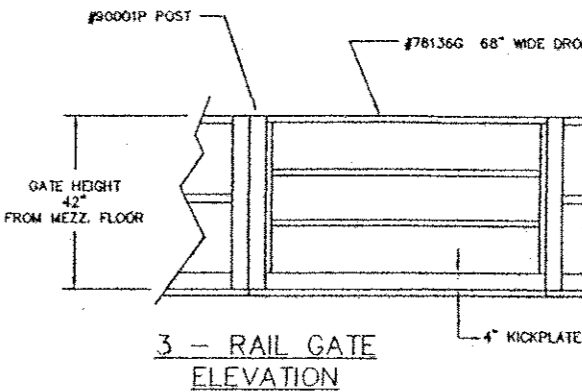
- EQUIPTO SHALL FURNISH ALL THE V-GRIP SHELVING, SLOTTED ANGLE BRACKETS, #5700 SERIES ANGLE, AND MODULAR MEZZANINE MATERIAL AS SPECIFIED IN THESE DRAWINGS.
- NOTICE TO THE INSTALLER:
THE ASSEMBLER SHALL VERIFY LOCATIONS OF WALLS, BUILDING COLUMNS, AND ANY OTHER OBSTRUCTIONS PRIOR TO ASSEMBLY.
EACH MODULAR MEZZANINE COLUMN IS TO BE ANCHORED TO THE FLOOR WITH HARDWARE FURNISHED BY OTHERS. THERE IS ONE 9/16" DIAMETER HOLE PER POST.
- MEZZANINE SPECIFICATIONS:
FLOORING IS BAR GRATING PANELS.
RAILING, DROP GATE AND STAIRWAY.
FLOOR HEIGHT IS: 8'-1 1/8"
SUPPORT HEIGHT IS: 8'-0 1/8"
MINIMUM CLEARANCE: 7'-8 1/8" SLOTTED ANGLE
MINIMUM CLEARANCE: 7'-0 7/8" MEZZANINE
FLOOR CAPACITY - 150 LBS PER SQUARE FOOT
(MAXIMUM UNIFORMLY DISTRIBUTED LOAD.)
- THIS MEZZANINE IS DESIGNED TO MEET OR EXCEED THE REQUIREMENTS OF THE OCCUPATIONAL SAFETY AND HEALTH ADMINISTRATION (O.S.H.A.).



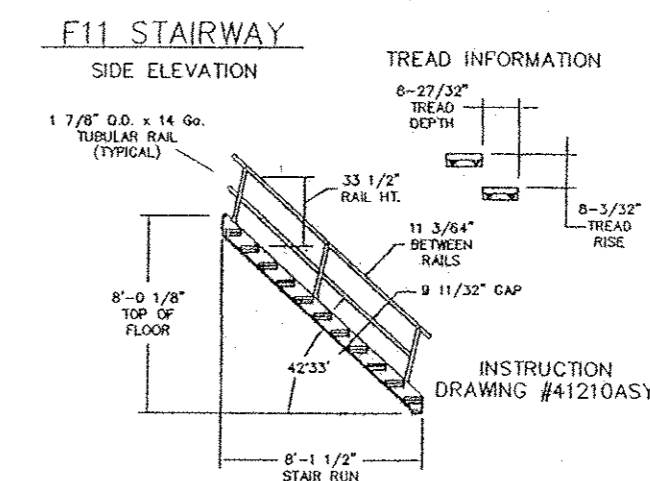
MEZZANINE ELEVATION



TYPICAL RAILING UNIT ELEVATION



3 - RAIL GATE ELEVATION



THIS STAIRWAY MEETS THE OCCUPATIONAL SAFETY AND HEALTH ADMINISTRATION (O.S.H.A.) CODE ONLY. PLEASE SIGN BELOW TO CONFIRM ACKNOWLEDGMENT OF THIS STATEMENT

5-27-03
KENNETH R. KLIMAS
N.J. PROFESSIONAL ENGINEER
NO. 26889

Kenneth R. Klimas
SIGNATURE

DATE
EQUIPTO
4550 BELTWAY
ADDISON, TX 75001
ATTN: ALEX CORDAS

- STORAGE BACK
- STRUCTURAL REVIEW ONLY
- GRAVITY LOADING ONLY
- STAIRCASE NOT BOCA COMPLIANT

DRAWING NO. 02-239
SHEET 3 OF 3

DRAWN BY: AC
CHECKED BY: DATE: 08/28/02
V-GRIP DOUBLE DECK RAILING & STAIRWAY PLAN
REV: B

CUSTOMER: DEPOT AMERICA

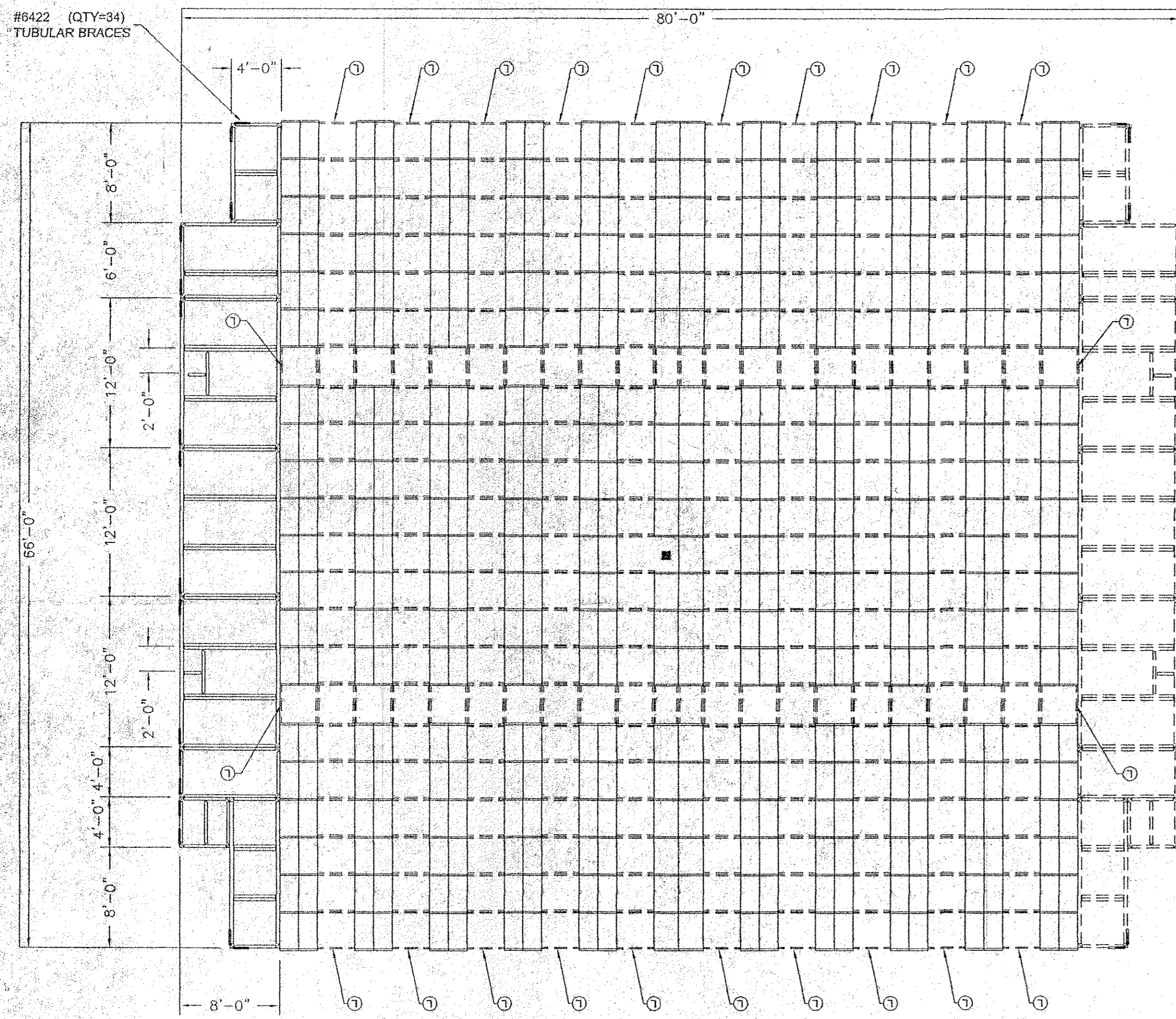
EQUIPTO
4550 Beltway Drive • Addison, Texas 75001
Tel: 214-441-9800 • Fax: 214-560-4408
1-800-850-8500
http://www.equipco.com
Professional Corporation
New dimensions in space utilization.
Established 1967

DISTRIBUTOR: SNAP ON TOOLS

REV	DESCRIPTION	DATE	BY	CHK
B	ADD DRAWING DETAILS	05/15/03	EW	AC
A	DESIGN CHANGED OLD AND NEW MATERIAL	10-31-02	AC	

REC'D: 02-239 02-239 BRUCE MARKS

GROUND FLOOR LEVEL SLOT ANGLE SUPPORT PLAN

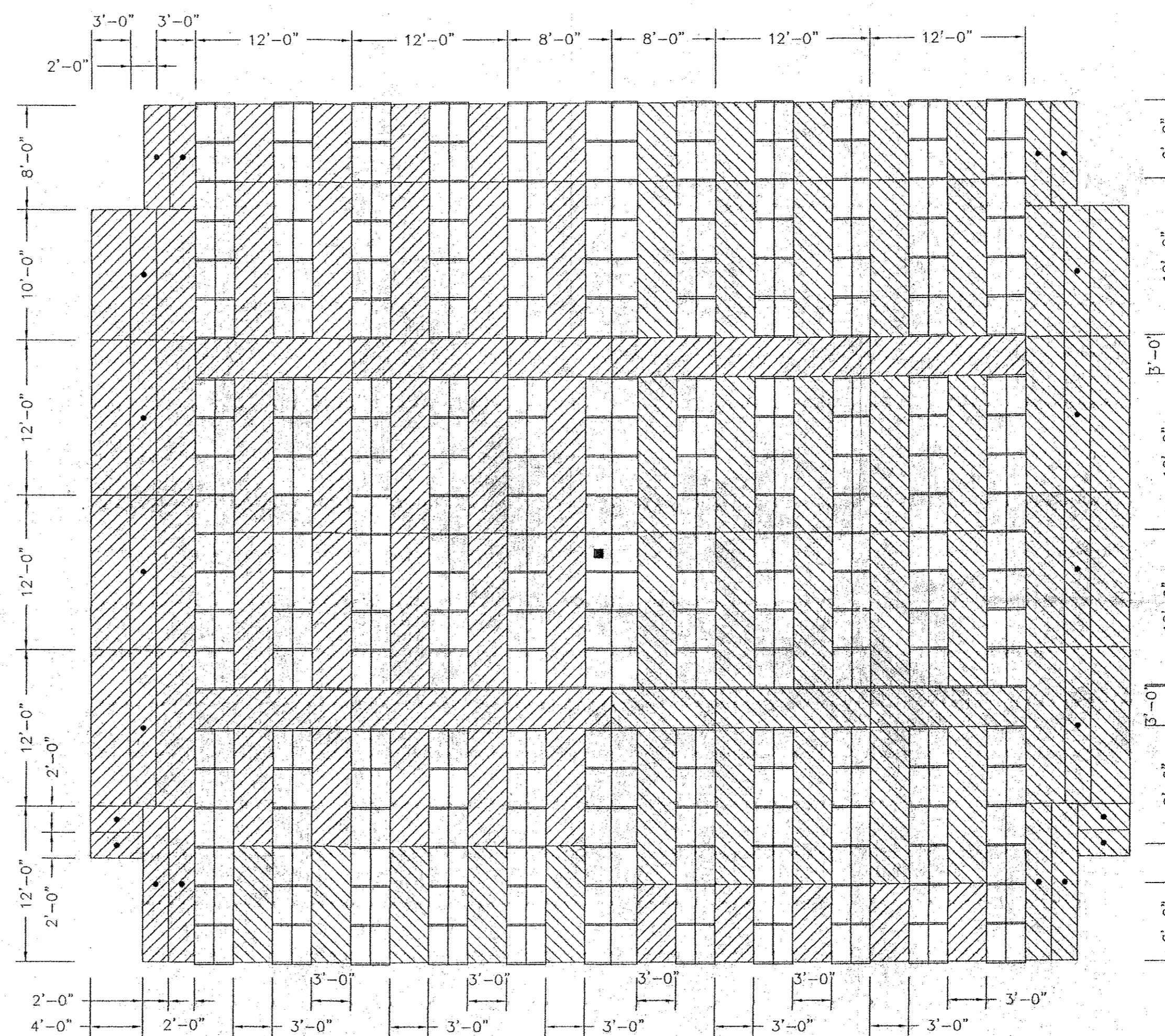


SLOT ANGLE CONFIGURATION DETAILS

- ① ONE PIECE ANGLE
- ② TWO PIECES "I" BEAM

(ALL ANGLES ARE IN "I" BEAM CONFIGURATION UNLESS OTHERWISE SPECIFIED.)

MEZZANINE LEVEL FLOOR PLAN



FLOORING DETAILS

BAR GRATING PANELS
 QTY= 2, #BRG2448, 24"Dx 48"W
 QTY= 2, #BRG2496, 24"Dx 96"W
 QTY= 1, #BRG24120, 24"Dx120"W
 QTY= 5, #BRG24144, 24"Dx144"W
 QTY= 10, #BRG3672, 36"Dx 72"W
 QTY= 3, #BRG3696, 36"Dx 96"W
 QTY= 5, #BRG36108, 36"Dx108"W
 QTY= 2, #BRG36120, 36"Dx120"W
 QTY= 27, #BRG36144, 36"Dx144"W

5-27-03
 KENNETH R. KLIMAS
 N.J. PROFESSIONAL ENGINEER
 NO. 20869

Kenneth R. Klimas
 STORAGE RACK
 STRUCTURAL REVIEW ONLY
 GRAVITY LOADING ONLY

DRAWING NO.
 02-239
 SHEET 2 OF 3

CUSTOMER
 DEPOT AMERICA

EQUIPTO
 4550 Bellway Drive • Addison, Texas 75001
 Tel: 214-443-9600 • FAX: 214-560-4408
 1-800-333-0001
<http://www.equipito.com>
 New dimensions in space utilization.
 Established 1977

DISTRIBUTOR
 SNAP ON TOOLS

REV	DESCRIPTION	DATE	BY	CHK	SCALE	DATE
B	ADD DRAWING DETAILS	05/15/03	BW	JAC	1/8"=1'-0"	06/28/02
A	DESIGN CHANGED OLD AND NEW MATERIAL	10-31-02	JAC	JAC		

02-239 02-239 REGION