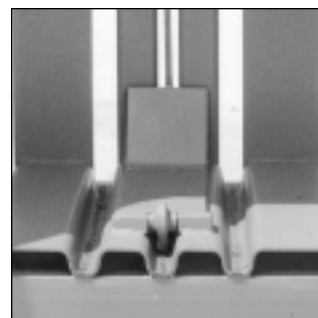


# V-3620 Recycler Baler

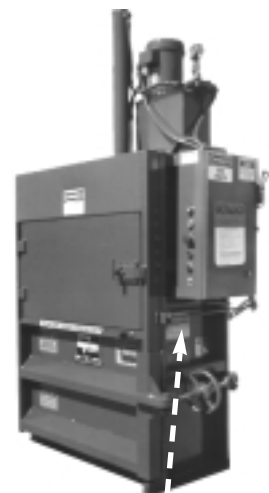
**Chain-less  
Bale Ejector!**  
No chains to  
break. No  
rear chains to  
hook. Saves  
maintenance,  
time, and  
space.



The V-3620 is specifically engineered to recycle aluminum cans, corrugated cartons, computer paper, plastics, and rags. It is ideal for those generating less than 2,000 pounds of corrugated per week and producing small, dense bales while occupying only a few square feet of valuable floor space.

**Options...** Non-scarring polyurethane casters allow the V-3620 to be easily moved into a corner when not in use. Galvanized bale ties are rust resistant 14 gauge, 14 feet, 70,000 lbs. psi tensile strength. Opposite side door hinge, special paint, and a field service kit are also available.

**Additional Benefits...** Reduces hauling costs, produces income from recyclable materials, reduces labor expense in breaking and tying cartons, eliminates pilferage associated with open trash containers, recaptures valuable floor space, eliminates fire and health violations in trash areas, decreases employee injuries and improves morale, improves traffic flow and general housekeeping.



**Door Activated Auto  
Bale Eject** - eliminates  
chain breakage.

**Dimensional Data:**

Overall Width . . . . .	53"	1346mm
Overall Depth . . . . .	32"	813mm
Overall Height . . . . .	94"	2388mm
Feed Height. . . . .	29"	737mm
Bale Chamber Size . . . . .	20"D x 24"H x 36"W . . . . .	508mm x 610mm x 914mm
Feed Opening Height. . . . .	18"	457mm
Bale Door Clearance . . . . .	42 1/2"	1080mm

**Performance:**

Cycle Time (empty) . . . . .	30 sec.	
Platen Force (lbs) . . . . .	14,100 lbs.	62.7 kN
Platen Pressure. . . . .	19.6 psi.	135 kPa
Motor. . . . .	3 HP	2.24 kW
Pump . . . . .	3 gpm.	11.36 L/min.
Cylinder. . . . .	3" bore x 2" rod.	76mm x 51mm
Cylinder Stroke . . . . .	32"	813mm



**Bale Size:**

Bale Size. . . . .	36"W x 20"D x 20"H . . . . .	914mm x 508mm x 508mm
Bale Weight. . . . .	100-150 lbs. OCC . . . . .	45.4 - 68 kg

**Shipping Weight:** . . . . . 1,500 lbs. . . . . 680 kg



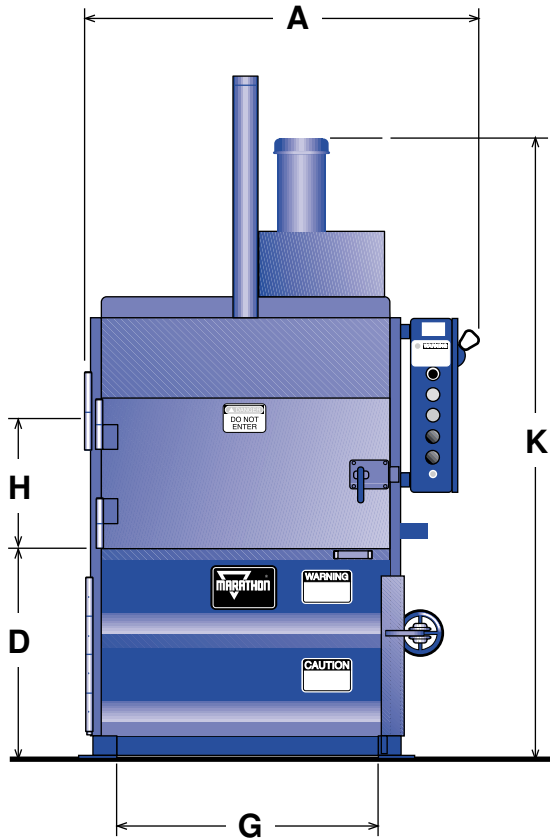
**Other Features:** mechanical bale made indicator; conventional bale tie-off; automatic/structural bale ejector; solid, side hinged feed gate; fixed retainer teeth; controls include: key on/off, auto cycle, stop, and manual up.

**Balers**

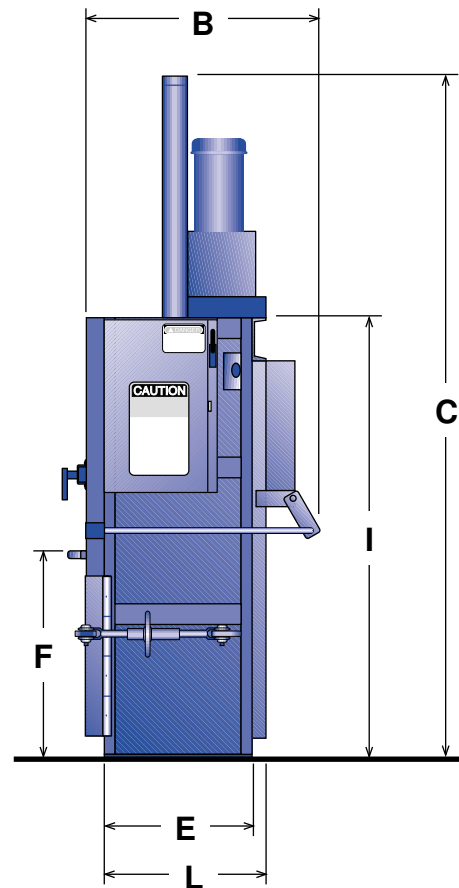
# V-3620 Recycler Baler

DRAWING NOT  
TO SCALE

The Dimensions shown may vary  
to accommodate improvements in the design.



FRONT VIEW



SIDE VIEW

Overall Width A	Overall Depth B	Overall Height C	Feed Height D	Bale Chamber Depth E	Bale Chamber Height F	Bale Chamber Width G	Load Open Height H	Body Height I	Bale Door Clearance J	To Top of Motor K	Body Depth L
53"	32"	94"	29"	20"	24"	36"	18"	60 7/8"	42 1/2"	85 5/8"	22"
1346mm	813mm	2388mm	737mm	508mm	610mm	914mm	457mm	1546mm	1080mm	2175mm	559mm



**MARATHON EQUIPMENT COMPANY**

P.O. Box 1798 • Vernon, AL 35592-1798 USA • (205) 695-9105 fax (205) 695-7250 1-800-633-8974  
 130 Hwy. 339 • Yerington, NV 89447 USA • (775) 463-4030 fax (775) 463-4531 1-800-624-5724  
 901 Industrial Park Rd. • Clearfield, PA 16830 USA • (814) 765-0200 fax (814) 765-2072 1-800-922-7062



ENVIRONMENTAL INDUSTRY

Pictures in this literature are illustrative only. Specifications are subject to change without notice in order to accommodate improvements to the equipment. Certified in compliance with ANSI Regulation Z245.5 and all OSHA standards. Products must be used with safe practice and in accordance with said regulations and standards.