

# S Series Storage Shelving



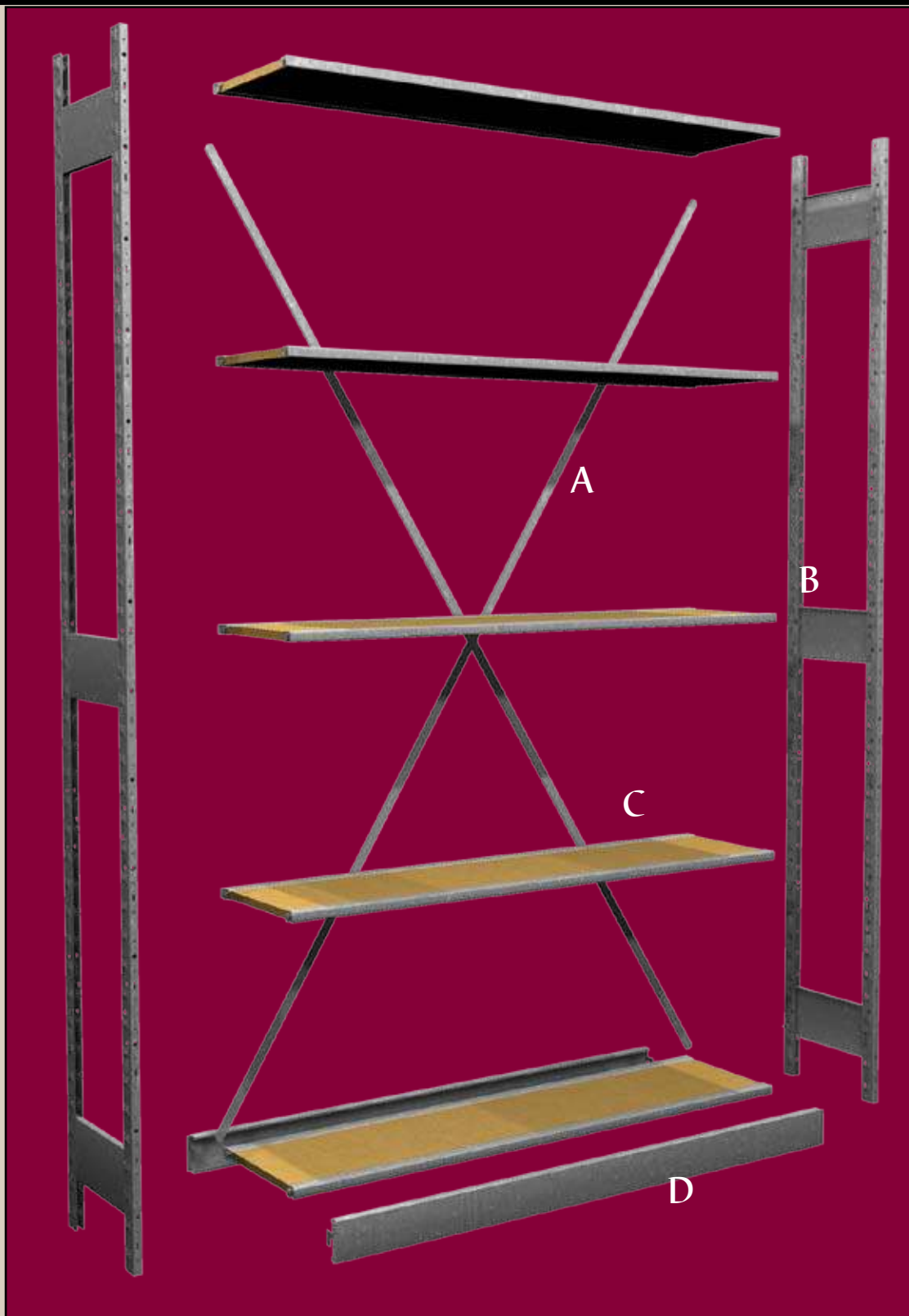
Closed Section  
w/Hangrod



Open Section

801

# S Series Storage Shelving Components



Components: A = Crossbrace    C = Shelf  
B = Upright                    D = Shelf Front

# S Series Storage Shelving

## S Series Storage Shelving:

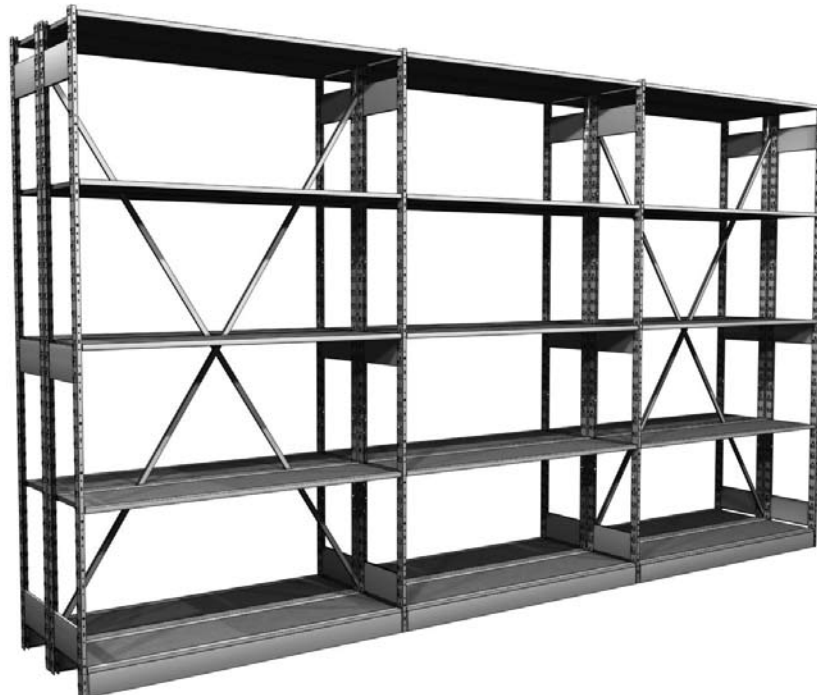
---

- Integrated wood & steel construction for strength & economy
- Pre-assembled all steel Uprites, one piece Shelves, & Cross Braces for installation ease (Open Uprite Pat. # 6,085,918)
- Particleboard Shelves reinforced with steel channels front & back
- Accessories available
- Standard Finish: GLV (Galvanized) unless otherwise noted

## Size Information:

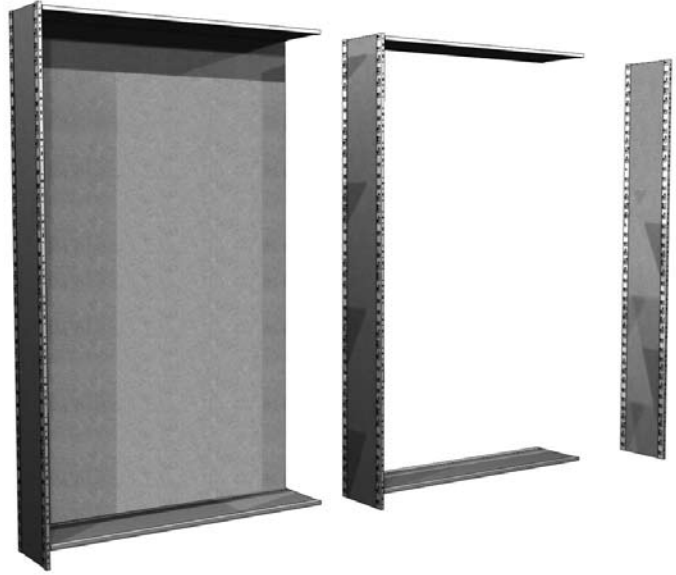
---

- Clear opening between posts:  
Nominal shelf width minus 1 1/4"
- Overall length:  
Length of continuous run is the sum of the nominal section widths plus 1 1/4" to account for end posts
- Overall depth equals the nominal depth
- Vertical clearance between shelves:  
Equals the center-to-center shelf spacing minus 3/4"
- Vertical adjustment 2" on centers



# S Series Storage Shelving Unit Assemblies

## Storage Shelving Sections



### Storage Shelving Sections:

- Open (Pat. # 6,085,918) or Closed Uprites
- Includes top & bottom Shelf (two Shelves per section)
- Additional Shelves ordered separately (pg 806)
- One end Uprite Assembly required to finish each continuous run; including single sections
- Crossbrace or Closed Back sections should be ordered based on specifications (pg 805)
- Crossbraces & Back also can be ordered separately (pg 805)
- **For pricing see section 800, pg 1-14**

### EXAMPLE PART NO.

|    |   |    |   |    |    |   |
|----|---|----|---|----|----|---|
| SS | N | XR | 4 | 12 | 84 | R |
|----|---|----|---|----|----|---|

- SS = S Series Storage Section  
N = "N" Open or "P" Closed Uprites  
XR = Lateral Stabilization:  
 "XR" Regular Duty Crossbrace:  
 1200 lb per section (48"- 96"H only),  
 "XH" Heavy Duty Crossbrace:  
 2400 lb per section (72"- 144"H only),  
 "B" Back Panel: 2400 lb per section,  
 "N" No brace: (see diagram pg 805 for bracing guidelines)
- 4 = Section Width: 3' or 4'  
12 = Shelf Depth: 12", 18", 24", 30"  
84 = Section Height: 48", 60", 72",  
 84", 96", 108", 120", 144"  
R = "R" Regular Duty Shelves  
 "H" Heavy Duty Shelves  
 "WG" Wiregrid Shelves

### STANDARD FINISH:

|     |     |
|-----|-----|
| GLV | GLV |
|-----|-----|

- GLV • Uprite & Shelf  
GLV • Crossbrace  
 • N/A for Backs  
 • Leave blank for no brace

## Assembled Uprite



### Assembled Uprite:

- Galvanized steel posts
- Two Styles:  
 Open: Galvanized steel Uprite braces (Pat. # 6,085,918)  
 Closed: 5/8" unfinished particleboard panel
- Shelf lances 2" on center
- One assembly required for each 3' or 4' Section & one at the end of each run
- **For pricing see section 800, pg 15**

### EXAMPLE PART NO.

|     |    |     |   |
|-----|----|-----|---|
| SSU | 12 | 048 | N |
|-----|----|-----|---|

### STANDARD FINISH:

|     |
|-----|
| GLV |
|-----|

- SSU = S Series Storage Uprite  
12 = Shelf Depth: 12", 18", 24", 30"  
048 = Section Height: 48", 60", 72", 84", 96", 108", 120", 144"  
N = "N" Open or "P" Closed

# S Series Backs & Crossbraces

## S Series Backs & Crossbraces:

- All sections must be stabilized per the minimum recommendation on the diagram mid page:  
Lateral stability obtained in one of three ways:
  - Order Crossbrace below
  - Order Back Panel below
  - Order braced sections on (pg 804)

## Crossbrace:

- Required on ends of each section & every fourth section in between (see diagram below)
- Back-to-back runs can share Crossbraces if posts are securely connected with Back-to-Back Screws (pg 808)
- Part number below includes two Crossbraces when section height is over 96"
- For pricing see section 800, pg 16**

### EXAMPLE PART NO.

SSX 4 48 R

SSX = S Series Crossbrace  
 4 = Section Width: 3' or 4'  
 48 = Section Height:  
 36", 48", 60", 72", 84",  
 96", 108", 120", 144"  
 R = Load capacity, uniformly  
 distributed load per Section:  
 "R" 1200 lb.: (48"H - 96"H)  
 "H" 2400 lb.: (72"H - 144"H)

### STANDARD FINISH:

GLV

|   |   |   |   |   |   |   |   |   |   |
|---|---|---|---|---|---|---|---|---|---|
| 1 | X |   |   |   |   |   |   |   |   |
| 2 | X | X |   |   |   |   |   |   |   |
| 3 | X |   | X |   |   |   |   |   |   |
| 4 | X |   |   | X |   |   |   |   |   |
| 5 | X |   |   |   | X |   |   |   |   |
| 6 | X |   |   | X |   | X |   |   |   |
| 7 | X |   |   | X |   |   | X |   |   |
| 8 | X |   |   |   | X |   |   | X |   |
| 9 | X |   |   |   | X |   |   |   | X |

X = denotes braced section

## Crossbrace



## Back Panels

## Back Panels:

- Can be used on back of each section to create a closed or "closet" section
- 1/8" Hardboard, unfinished
- Required on ends of each section & every fourth section in between for stabilization
- In back-to-back closed sections, supplement an additional Back or Crossbrace in all sections requiring a brace
- Notched to accept Back-to-Back Connectors (pg 808)
- 108" - 144" Backs are two-pieces with an "H" Splicer
- Uniformly distributed load of 2,400 lb. per Section
- For pricing see section 800, pg 16**

### EXAMPLE PART NO.

SSBP 48 048 U

SSBP = S Series Back Panel  
 48 = Section Width: 36" or 48"  
 048 = Section Height: 48", 60", 72", 84",  
 96", 108", 120", 144"  
 U = Unit (includes: screws, washers, & "H" Splicer)

### STANDARD FINISH:

N/A



# S Series Shelves

## EXAMPLE PART NO.

|    |   |    |   |
|----|---|----|---|
| SS | 4 | 12 | R |
|----|---|----|---|

SS = S Series Storage Shelf  
4 = Section Width: 3' or 4'  
12 = Shelf Depth: 12", 18", 24", 30"  
R = "R" Regular Duty  
"H" Heavy Duty  
"WG" Wiregrid

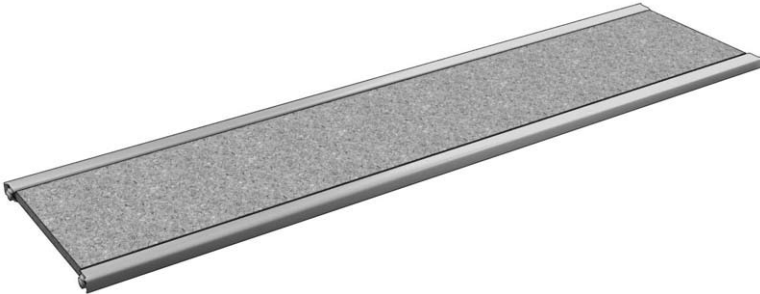
## STANDARD FINISH:

|     |
|-----|
| GLV |
|-----|

## S Series Storage Shelf:

- Pre-assembled, no loose hardware needed
- Particleboard or wiregrid
- Steel reinforced front & rear edges
- Easily installed & repositioned

## Regular Duty Storage Shelf



## Regular Duty Storage Shelf:

- 5/8" industrial grade particleboard
- Seal coated particleboard for durability & stain resistance
- Reinforced with 3/4"D x 3/4"H galvanized steel channels
- Adjusts in 2" vertical increments
- Uniformly distributed load of 500 lb. per shelf
- **For pricing see section 800, pg 17**

## Heavy Duty Storage Shelf



## Heavy Duty Storage Shelf:

- 5/8" industrial grade particleboard
- Seal coated particleboard for durability & stain resistance
- Reinforced with 1 1/4"D x 3/4"H Galvanized steel channels
- Adjusts in 2" vertical increments
- Uniformly distributed load of 600 lb. per shelf
- **For pricing see section 800, pg 17**

## Wiregrid Storage Shelf For Fire Proof Application



## Wiregrid Storage Shelf:

- Used in lieu of particleboard shelf
- 1" x 6" Wiregrid
- Provides for:
  - Light penetration
  - Water flow through for sprinklers
  - Cleanliness
- Reinforced 1 1/4"D x 3/4"H galvanized steel channel
- Adjusts in 2" vertical increments
- Uniformly distributed load of 500 lb. per Shelf
- **For pricing see section 800, pg 17**

## Base Fronts:

- 3"H steel "toekick" clips into Upright Assemblies under bottom Shelf
- Can be used as a product retainer at other levels
- CANNOT be used with Sliding Dividers (below)
- **For pricing see section 800, pg 18**

| SECTION WIDTH | PART NO. |
|---------------|----------|
| 36"           | SS1131   |
| 48"           | SS1133   |

STANDARD FINISH:

GLV

## Base Fronts



## Sliding Divider:

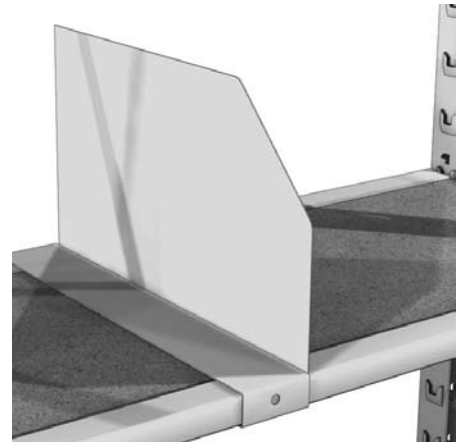
- 9"H
- Hooks onto front edge of Shelf without hardware
- Order divider style same as shelf style
- **For pricing see section 800, pg 18**

| SHELF DEPTH | REG. DUTY PART NO. | HEAVY DUTY PART NO. |
|-------------|--------------------|---------------------|
| 12"         | SS1272             | SS1262              |
| 18"         | SS1274             | SS1264              |
| 24"         | SS1275             | SS1266              |

STANDARD FINISH:

GLV

## Sliding Divider



## Hang Rod Unit:

- Includes:
  - 1 1/4" dia. galvanized steel rod
  - Two painted brackets
- Brackets are triple punched
- Order additional rods for double hanging on one pair of brackets
- Minimum two shelves per section for stability
- Uniformly distributed load:
  - 3'W Sections - 350 lb.
  - 4'W Sections - 250 lb.
- **For pricing see section 800, pg 18**

## Hang Rod Unit



## Hang Rod Unit

EXAMPLE PART NO.

SSHR 4 18

STANDARD FINISH:

GLV GRY

SSHR = S Series Hang Rod Unit  
 4 = Section Width: 3' or 4'  
 18 = Section Depth: 18" or 24"

GLV • Hangrod  
 GRY • Brackets

## Additional Hang Rods

| SECTION WIDTH | PART NO. |
|---------------|----------|
| 36"           | SS1121   |
| 48"           | SS1122   |

STANDARD FINISH:

GLV

## Additional Brackets

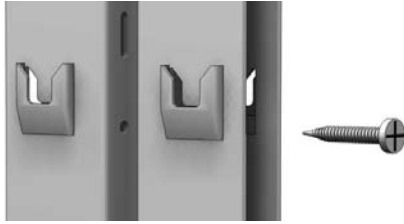
| SECTION DEPTH | PART NO. |
|---------------|----------|
| 18"           | SS1111   |
| 24"           | SS1112   |

STANDARD FINISH:

GRY

# S Series Components

## Back-to-Back Screw



### Back-to-Back Screw:

- #8 x 3/4" Phillips head sheet Metal screws
- Connect two Open Uprite Assemblies through pilot holes punched in Uprite post face creating double-entry Island
- **For pricing see section 800, pg 18**

| ASSEMBLY HEIGHT | # OF SCREWS OR CONNECTORS REQUIRED |
|-----------------|------------------------------------|
| 36" - 72"       | 2                                  |
| 84" - 108"      | 3                                  |
| 120" - 144"     | 4                                  |

|          |                  |
|----------|------------------|
| PART NO. | STANDARD FINISH: |
| SS2221   | N/A              |

## Back-to-Back Connector

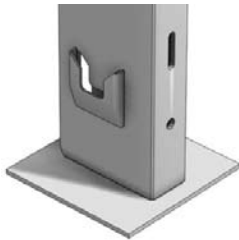


### Back-to-Back Connector:

- Connect Closed Uprite assemblies in Storage Shelving runs, creating double-entry Island
- Screws included
- **For pricing see section 800, pg 18**

|          |                  |
|----------|------------------|
| PART NO. | STANDARD FINISH: |
| SS1311   | GLV              |

## Floor Protector/Shim

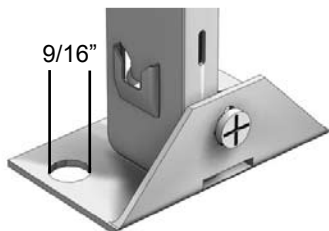


|          |                  |
|----------|------------------|
| PART NO. | STANDARD FINISH: |
| SSFS     | GLV              |

### Floor Protector/Shim:

- 1/16" thick steel pad
- Level Storage Shelving Uprites on uneven floors
- Protect floor from scratching
- **For pricing see section 800, pg 18**

## Floor Anchor



|          |                  |
|----------|------------------|
| PART NO. | STANDARD FINISH: |
| WS1241   | GLV              |

### Floor Anchor:

- Heavy gauge steel
- Angle fastens Uprite assembly to floor
- Required:
  1. Where bottom Shelf is NOT within 6" of floor
  2. On runs when height-to-depth ratio exceeds 6 to 1
  3. To meet seismic anchoring specifications
- Includes Uprite mounting screw
- **For pricing see section 800, pg 18**

## Uprite Connector



|          |                  |
|----------|------------------|
| PART NO. | STANDARD FINISH: |
| SSUC     | GLV              |

### Uprite Connector:

- Connect two Uprite assemblies to increase unit height
- Shelves CANNOT be installed at same location as connectors
- 7 1/2" long
- **For pricing see section 800, pg 18**

# S-Series Desk & Marking Bench

## Desk:

- Built with standard components with a smooth Marteck® Top
- Top is 50"W & 31" from floor
- Open Uprite (Pat. # 6,085,918)
- Order additional Shelves separately (pg 806)
- Order Locking Drawer separately (see below)
- Optional Light Kit (pg 227)
- **For pricing see section 800, pg 18**

| UNIT PART NO. |
|---------------|
| SSDSK2450     |

### STANDARD FINISH:

|     |     |
|-----|-----|
| GLV | MTK |
|-----|-----|

GLV • Uprite, Shelves, & Crossbrace  
 MTK • Top

| Unit Components |           |                                   |
|-----------------|-----------|-----------------------------------|
| Qty.            | Part No.  | Description                       |
| 1               | SS1251    | Desk Top, 50"W x 24"D             |
| 1               | SSX436RD  | Crossbrace Assembly, 48"W x 36"H  |
| 2               | SS412R    | Reg Duty Shelf, 48"W x 12"D       |
| 1               | SS424R    | Reg Duty Shelf, 48"W x 24"D       |
| 2               | SSU12030N | Open Uprite Assembly, 12"D x 30"H |
| 2               | SSU12060N | Open Uprite Assembly, 12"D x 60"H |

## Locking Drawer

| PART NO. |
|----------|
| SSMBD    |

### STANDARD FINISH:

|     |
|-----|
| WHT |
|-----|

## Marking Bench:

- Built with standard Storage Shelving components with a smooth Marteck® Top
- Available in three lengths with two tiers of shelves
- Overall unit height: 37"
- Top length equals nominal length x 33"D
- 10' Tops are two-piece, assembled in field
- S-Series section beneath top is 24" narrower than top
- Order additional shelves separately (pg 806)
- Order Locking Drawer separately (see above)
- **For pricing see section 800, pg 18**

| Quantity |         |         | Unit Components |                                     |
|----------|---------|---------|-----------------|-------------------------------------|
| SSMB06U  | SSMB08U | SSMB10U | Part No.        | Description                         |
| 4        | 8       | 8       | SS2221          | #8 x 3/4" Screws                    |
| 4        | 8       | 8       | SS1511          | Lock Washers                        |
| 2        | 3       | 3       | SSU30036P       | Closed Uprite Assembly, 30"D x 36"H |
| 1        | 0       | 0       | SS1243          | Top, 72"W x 33"D                    |
| 0        | 1       | 0       | SS1244          | Top, 96"W x 33"D                    |
| 0        | 0       | 1       | SS1245          | Top, 120"W x 33"D                   |
| 0        | 6       | 0       | SS330R          | Regular Duty Shelf, 36"W x 30"D     |
| 3        | 0       | 6       | SS430R          | Regular Duty Shelf, 48"W x 30"D     |
| 0        | 2       | 0       | SSBP36036       | Back Panel, 36"W X 36"H             |
| 1        | 0       | 2       | SSBP48036       | Back Panel, 48"W X 36"H             |

### EXAMPLE PART NO.

|      |    |   |
|------|----|---|
| SSMB | 06 | U |
|------|----|---|

SSMB = S Series Marking Bench  
 06 = Top Length: 6', 8', 10'  
 U = Unit

### STANDARD FINISH:

|     |     |     |
|-----|-----|-----|
| GLV | MTK | N/A |
|-----|-----|-----|

GLV • Uprite & Shelves  
 MTK • Tops  
 N/A • for Backs

## Desk



Light Kit

Locking Drawer

## Marking Bench

